

### Features

- Sub plates with threaded ports for mounting subplate valve sizes D02, D03, D05, D07 and D08 (NG4 NG6, NG10, NG16, NG25)
- Mounting holes for mounting to fixed structure.
- Material option of clear anodized aluminum 6061-T6 (3000PSI rated) or black galvanized steel (5000psi rated)



### Ordering Details

S	Subplate
A	Material: A=Aluminum, S=Steel
6-	Subplate Mounting Size
S-	Side Porting
O8	P Port Size
O8	T Port Size
O8-	A and B Port Size
M-	Metric Bolts thread
1	Series

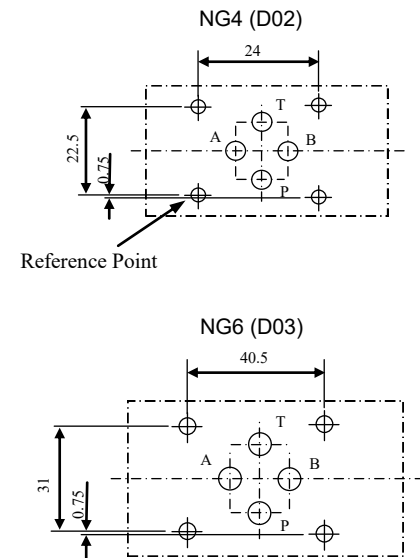
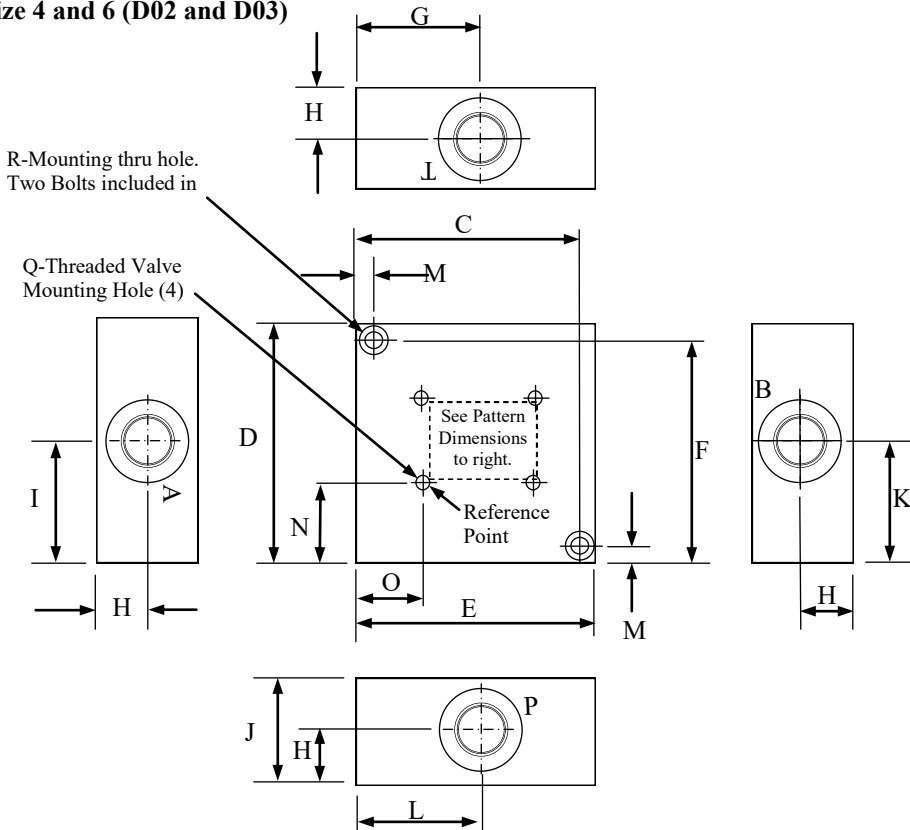
Code	Size
4	NG4 (D02)
6	NG6 (D03)
10	NG10 (D05)
10H	NG10 (D05) 2-Stage
16	NG16 (D07)
25	NG22/25 (D08)
32	NG32 (D10)

Size	P, T, A and B Port Code	Nominal Port Size Inch	SAE O-Ring boss thread details	X and Y Port, SAE O-Ring boss Thread
4 (D02)	O4	1/4	-4, 7/16-20	-
6 (D03)	O8	1/2	-8, 3/4-16	-
10 (D05)	O8	1/2	-8, 3/4-16	-
10H (D05H)	O12	3/4	-12, 1 1/16-12	-4, 7/16-20
16 (D07)	O12	3/4	-12, 1 1/16-12	-6, 9/16-18
25 (D08)	O16	1	-16, 1 5/16-12	-6, 9/16-18
32 (D10)	O24	1 1/2	-24, 1 7/8-12	-6, 9/16-18

Example Part Number: SA6-S-O8O8O8-M-1

### Dimensional Data, (Dimensions in mm)

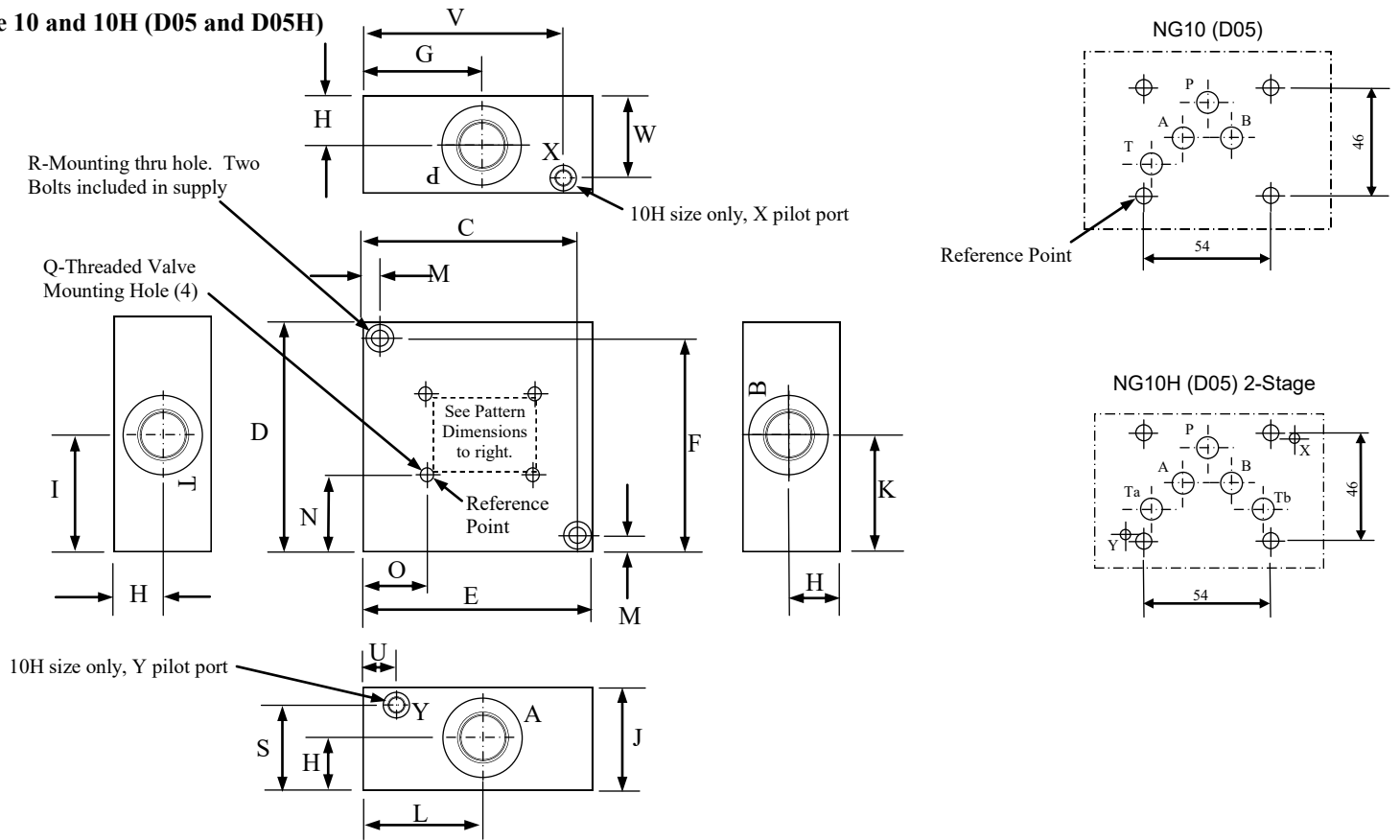
#### Size 4 and 6 (D02 and D03)



		Dimensions (mm)														
		C	D	E	F	G	H	I	J	K	L	M	N	O	Q	R (Qty. 2)
Size	4 (NG4/D02)	50.8	2.25	2.25	50.8	28.6	12.7	28.6	25.4	28.9	28.6	6.4	17.35	16.6	M5-0.8	M6-1.0 x22mm SHCS
	6 (NG6/D03)	82.6	88.9	88.9	82.6	46.0	19.1	45.2	38.1	45.2	46.0	6.4	29.5	24.5	M5-0.8	M6-1.0 x40mm SHCS

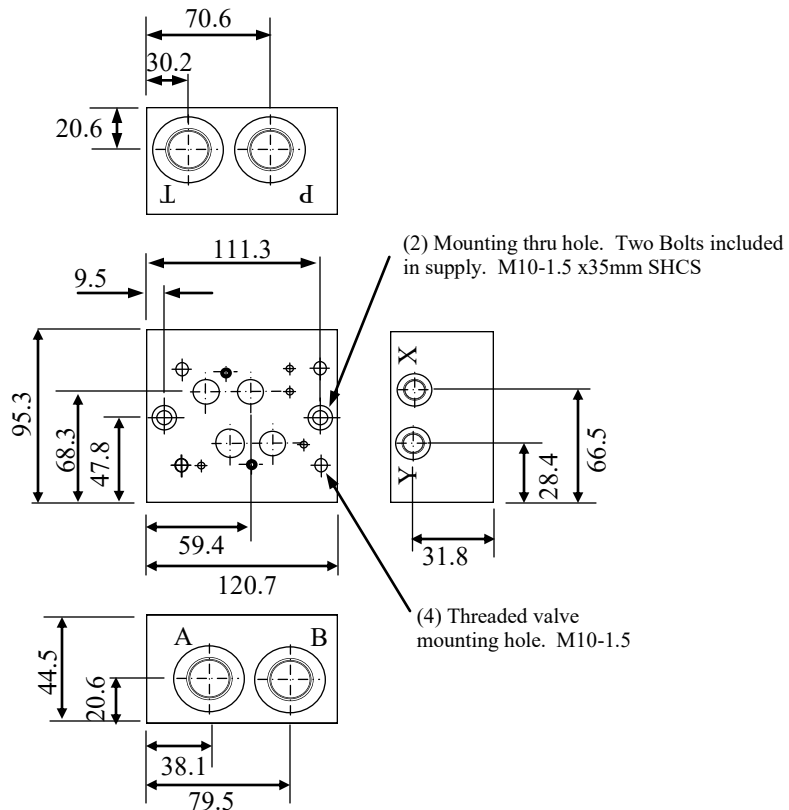
**Dimensional Data, (Dimensions in mm)**

**Size 10 and 10H (D05 and D05H)**



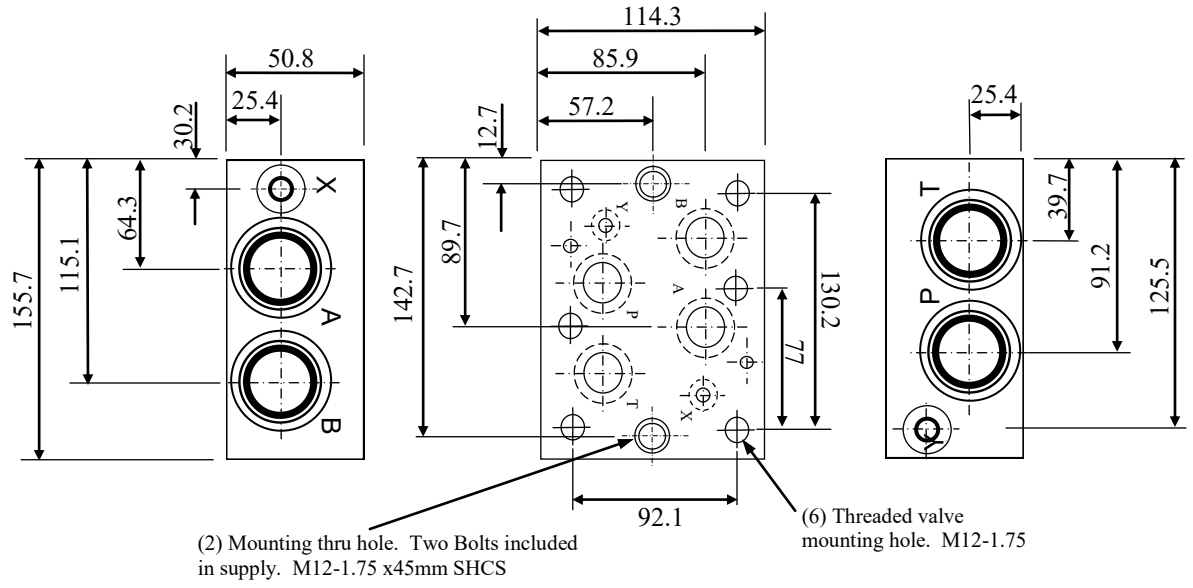
		Dimensions (mm)																		
		C	D	E	F	G	H	I	J	K	L	M	N	O	S	U	V	W	Q	R (Qty. 2)
Size	10 (NG10/D05)	91.9	79.5	101.6	69.9	50.8	16.0	34.8	31.8	41.1	45.2	9.4	17.5	34.1	-	-	-	-	M6-1.0	M10-1.5 x40mm SHCS
	10H (NG10H/D05H)	111.0	95.3	120.7	85.9	60.2	22.4	47.8	20.3	47.8	54.1	9.5	24.6	33.2	22.4	20.6	100.1	22.4	M6-1.0	M10x1.5 x45mm SHCS

**Size 16 (D07)**



**Dimensional Data, (Dimensions in mm)**

**Size 25 (D08)**



**Size 32 (D10)**

